

#### INFORMATION

For more information about our products  
please visit our website:

[www.arytrays.com](http://www.arytrays.com)

#### CONTACT

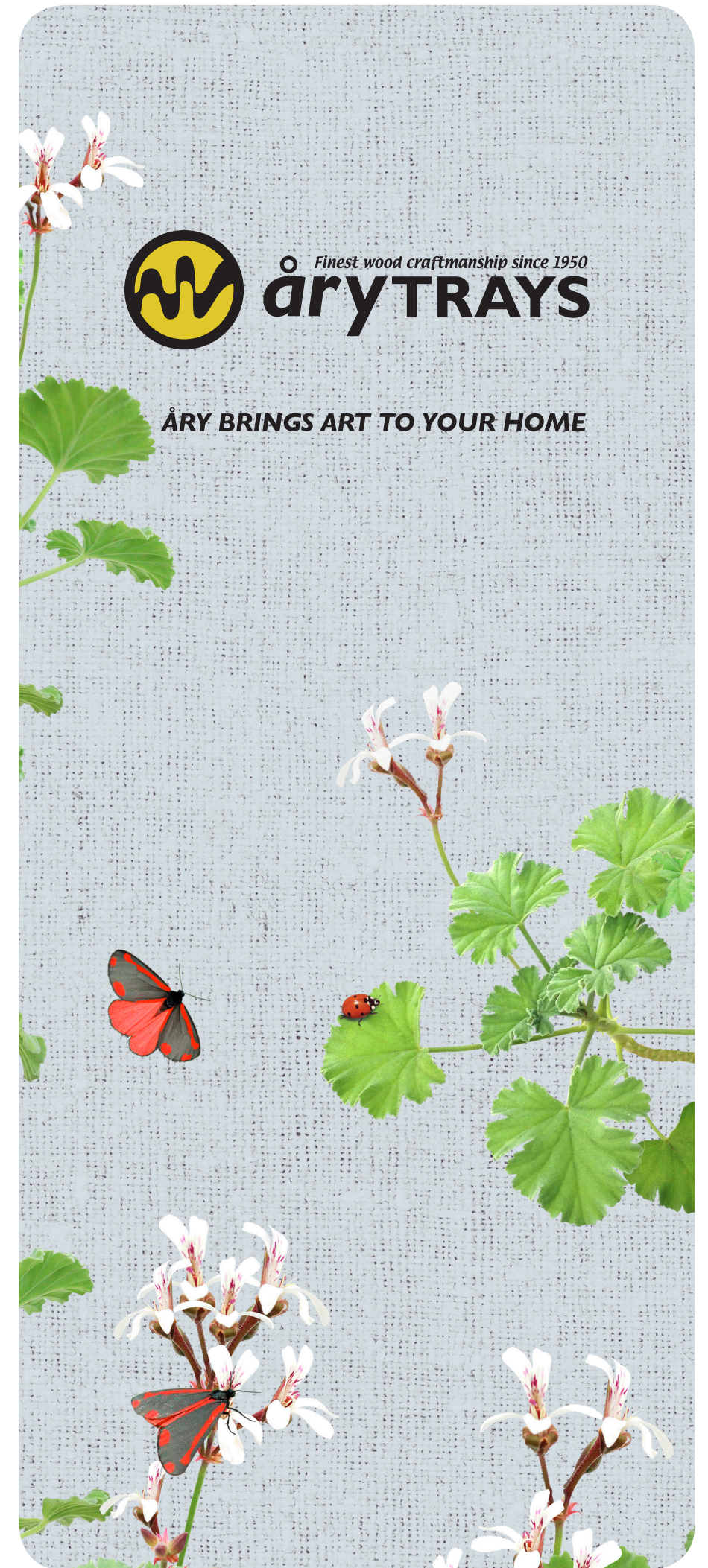
Head Office:

Åry Trays AB  
Box 801  
382 28 Nybro  
Sweden

Phone: +46 (0) 481 423 40  
Fax: +46 (0) 481 423 50  
E-mail: [info@arytrays.com](mailto:info@arytrays.com)

#### SOCIAL MEDIA

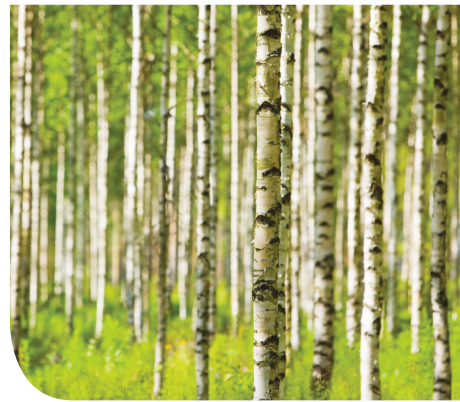
Find Åry Trays on social media  
Facebook: [facebook.com/Arytrays](https://facebook.com/Arytrays)  
Instagram: [ary\\_trays](https://instagram.com/ary_trays)



**ÅRY BRINGS ART TO YOUR HOME**

# ABOUT ÅRY TRAYS

Åry have been manufacturing birch wood trays at the original site in Sweden for over 60 years. We have always invested in the best raw materials with the highest environmental credentials and we continue to innovate whilst retaining hand crafted techniques.



## FINEST RAW MATERIALS

Åry trays are individually hand made from the finest birch wood from well managed forests certified by the Forest Stewardship Council (FSC). Specifically sourced for its fine grain and rare width - the trays have no joins and are made from single sheets of birch to provide a high quality finish and longevity of use.



## BESPOKE & CUSTOMIZED

Whether you are a retailer, corporation, museum or designer Åry Trays can turn your images or fabric into the finest quality trays unique to you. Our commitment to the highest quality and innovation makes us the best in our field. Testimony to this is the long list of high profile international brands and designers who choose to feature their designs on Åry trays.



## QUALITY

Åry trays is certified ISO 14001 and have a durability of 5 years of wear and tear.



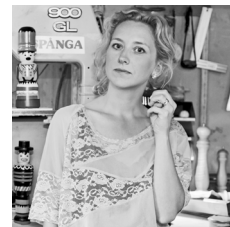
## DINING & KITCHEN ASSECCORIES

Hygiene is an important consideration for trays because they are used with food. Therefore all our trays are dishwasher safe.



## ANNA VIKTORSSON

Swedish designer Anna Viktorsson studied BA(hons) Design at HDK in Gothenburg and at University of the Arts in London. Anna is driven by a desire to create design that tells a story. Her designs have a strong Scandinavian feel and are recognised by bold colours and playfulness.



## CORNELIA WALDERSTEN ÅRFORS

Cornelia is a Stockholm based illustrator, graphic designer and art director. She studied advertising and graphic design at Beckmans College of Design in Sweden and has been awarded by prestigious titles such as Ung svensk form, Kolla! and Svensk Bokkonst.



## VICTORIA AND ALBERT MUSEUM

The Victoria and Albert Museum is the world's leading museum of art and design with collections unrivalled in their scope and diversity. The V&A was established in 1852 to make works of art available to all and to inspire future designers and manufacturers. Today, the V&A's collections, which span over 2000 years of creativity in virtually every medium and from many parts of the world, continue to intrigue, inspire and inform.

## PARIS



## KITCHEN COMPANIONS



## FLORA



## SAM PICKARD

British designer Sam Pickard creates fabrics which have been described as 'Modern Rustic' and are imbued with a sense of Exmoor where Sam lives and works. Her groundbreaking designs, twice shortlisted for the British Design Awards, are a striking and contemporary take on country living!



## MICHAEL ANGOVE

Michael trained at the prestigious Royal College of Art, where he developed many clever techniques to use on product and surface. These award winning, realistic drawings are all drawn by hand in colour pencil. Originals are sold at art shows across the globe. His highly desirable designs are elegant and seasonless in every home.



## ALABASTA

Asta Barrington is the designer behind the Alabasta collection. Currently living and working in Bath, England, she originally studied textiles at the Royal College of Art in London. Her idiosyncratic style has developed after many years designing and making complex embroidered fabrics, including hand made embroidered scarves and blankets which have sold in prestigious stores worldwide.

## MOORLAND PHEASANT



## GERANIUM



## BLOSSOM

